

EXTERIOR MATERIAL NOTES:

TYPICAL WALL PANEL:
 HBCI - EXPOSED FASTENING WALL SYSTEM - FEU - 26 GA
 METAL PANEL #1 - COLOR "DEEP GRAY"
 METAL PANEL #2 - COLOR "WHITE"

TYPICAL WALL BLOCK:
 CMU BLOCK - EXPOSED / NOT PAINTED
 COLOR - NATURAL GRAY

TYPICAL ROOF:
 HBCI - STANDING SEAM METAL ROOF
 DOUBLE-LOCK - 24 GA - 24"UJ
 COLOR "GALVALUME PLUS"

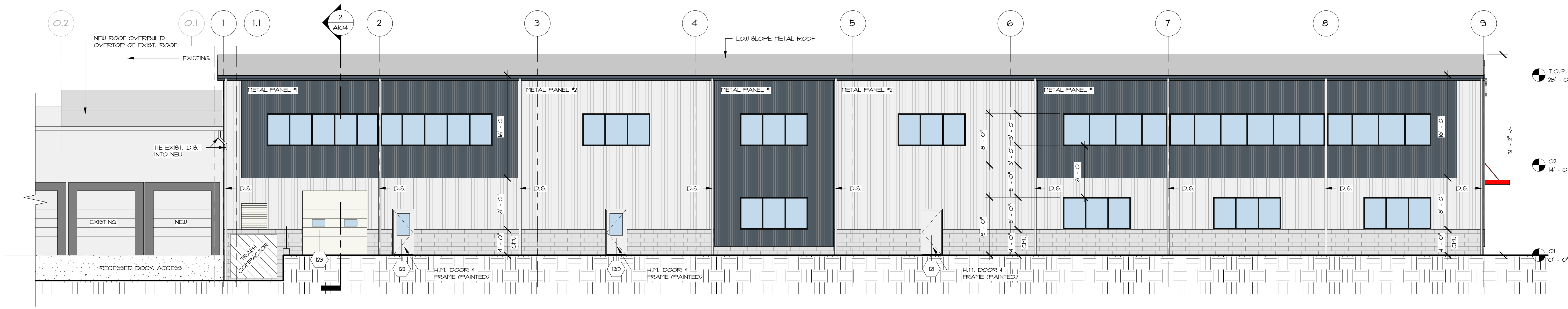
TYPICAL GUTTERS / D.S. / FASCIA:
 HBCI - COLOR "DEEP GRAY"

TYPICAL LINING:
 METALLIC PRODUCTS - DOOR CANOPY
 HBCI - COLOR "SCARLET RED" (ALL COMPONENTS)
 #SIZES NOTED ON ELEVATIONS

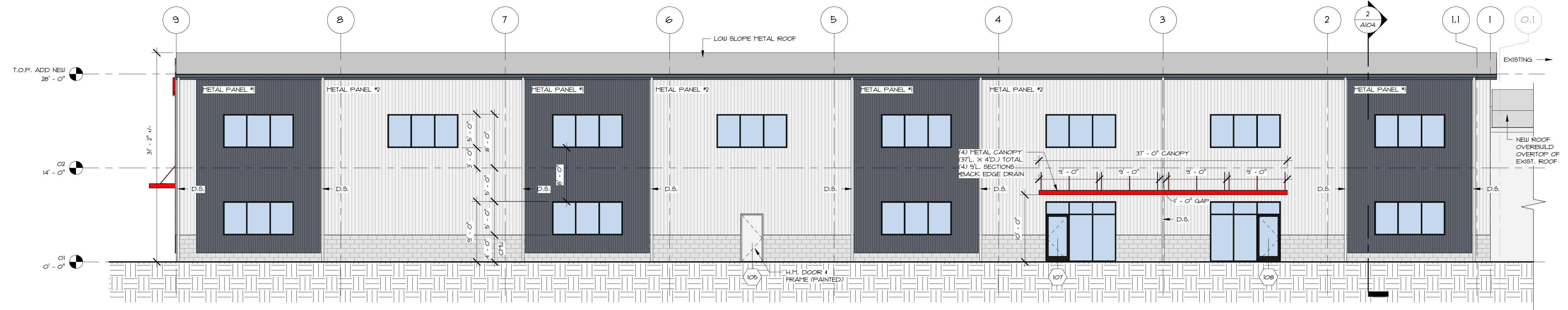
TYPICAL ALUMINUM STOREFRONT WINDOWS / DOORS:
 XXX HFGR
 COLOR "DARK BRONZE"

TYPICAL H.M. DOORS / DOOR FRAMES:
 PAINTED "XXX" (MATCH ALUM. STOREFRONT) OR METAL PANEL#1

1 EXTERIOR ELEVATION - SOUTH
 SCALE: 1/8" = 1'-0"



2 EXTERIOR ELEVATION - WEST
 SCALE: 1/8" = 1'-0"



3 EXTERIOR ELEVATION - EAST
 SCALE: 1/8" = 1'-0"

PARDI PARTNERSHIP ARCHITECTS P.C.
 25 CIRCLE STREET, SUITE 101
 ROCHESTER, NEW YORK 14607
 TEL: (585) 454-4670

Navalis Construction
design-build • construction management
 70 Linden Oaks, 3rd floor, Rochester, New York 14625
 Office: 585-458-7001 | Direct: 585-746-2388

DESIGNER: IN VIOLATION OF THE LAW FOR ANY PERSON UNLESS ACTING UNDER THE DIRECTION OF A LICENSED ARCHITECT TO ALTER IN ANY WAY PLANS SPECIFICATIONS OR REPORTS TO BRING THE SEAL OF AN ARCHITECT HAS BEEN APPLIED. IF AN ITEM BEARING THE SEAL OF AN ARCHITECT IS ALTERED, THE ALTERING ARCHITECT SHALL AFFIX TO THE RIGHT THE SEAL AND THE NOTATION "ALTERED BY" FOLLOWED BY THESE DISCIPLINE AND THE DATE OF SUCH ALTERATION AND A SPECIFIC DESCRIPTION OF THE ALTERATION.
 REFERENCE STATE OF NEW YORK EDUCATION LAW PART 65 - ARCHITECTURE EXCERPT 1/14
 WHEN THESE PLANS BEAR THE SEAL AND SIGNATURE OF A LICENSED PROFESSIONAL OF THIS OFFICE TO THE BEST OF THEIR PROFESSIONAL KNOWLEDGE, JUDGMENT AND BELIEF, THESE PLANS WILL HAVE BEEN PREPARED IN COMPLIANCE WITH THE APPLICABLE PROVISIONS OF THE ENERGY CONSERVATION AND CONSTRUCTION CODE OF NEW YORK STATE IN EFFECT AT THE DATE OF ISSUANCE.
 NYS ARCHITECTURE LICENSE EXPIRATION DATES:
 SCOTT FRANK: 9/30/27 | JASON DEBONO: 4/30/28 | JENNA EVANS: 5/26/29

PRELIMINARY
 NOT FOR CONSTRUCTION

QUALITROL - NEW ADDITION
 1385 FAIRPORT ROAD
 FAIRPORT, NY 14450

PROJECT NO.: 260003
 ISSUE DATE: 03/18/2026
 PLOT DATE: 3/18/2026 9:25:54 AM
 SCALE: 1/8" = 1'-0"
 DRAWN BY: JNE

REVISIONS

| NO. | DATE | DESCRIPTION |
|-----|------|-------------|
| | | |
| | | |
| | | |
| | | |

DRAWING TITLE:
BUILDING ELEVATIONS COLOR

DRAWING NUMBER:
A201